

PROFILE

2024-2025

CEEB CODE: 751344

SCHOOL & COMMUNITY

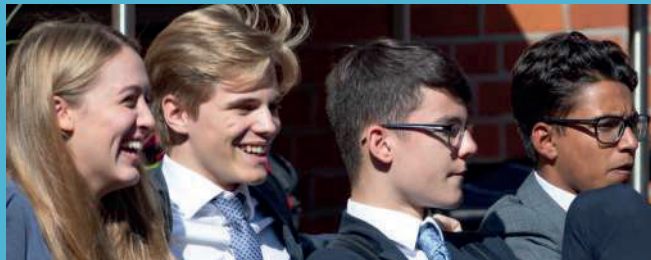
Latymer Upper and Prep School, whose Foundation dates back to 1624, is a vibrant, academically selective, co-educational independent day school for children aged 7-18. A high number of international students make up the 1440 pupil body, with some 20% of students able to access a flagship financial aid programme.

ACADEMIC ROUNDED & GROUNDED

Rooted in tradition but forward-thinking, Latymer offers a rich education that is rigorous but balanced, imparting a love of learning, academic breadth, a sense of social responsibility, and a global outlook. Latymerians are scholarly and engaged, compassionate and thoughtful, independently-minded but conscious of their impact on the community and their role in society.

Student wellbeing is central to our ethos. We have a Peer Mentoring scheme where senior students are trained to mentor younger pupils, and our school-wide wellbeing initiative, BOUNCE, is designed to encourage self-reliance and resilience. Students are encouraged to shape the school's values through participation in school committees covering issues such as Sustainability and Equality & Diversity.

Sciences Po



LATYMER UPPER & PREP SCHOOL

ACADEMICS

The emphasis in the Sixth Form programme at Latymer is on the development of academic depth and breadth, intellectual and personal independence, social responsibility, and a global perspective. The hallmark of this is the Latymer Diploma, where alongside A Levels or Pre-U, students complete core courses in Knowledge and Research Skills and Life Skills, take several ten-week electives, undertake a personal research project, and complete a service placement within the school or with one of our partners.

Academics at Sixth Form - equivalent to Grades 11-12

- Core of three A Level subjects
- Optional fourth A Level, AS Level, or EPQ (Extended Project Qualification)
- Latymer Research Report for those students not completing an EPQ
- A choice of over 30 ten-week elective courses

In line with peer institutions in the UK, we do not rank our students or calculate Grade Point Averages.

A Level Grades	2023-24	A*	A	B	C	D	E
Art & Design	60	29%	14%	9%	5%	1%	2%
Sciences	358	134%	148%	53%	13%	8%	2%
Mathematics	309	141%	114%	34%	12%	5%	3%
Classics	28	12%	12%	2%	2%	0%	0%
Performing Arts	30	16%	9%	4%	0%	1%	0%
Social Sciences	156	66%	62%	17%	10%	1%	0%
English	92	58%	17%	13%	1%	0%	2%
Modern Languages	67	24%	33%	10%	0%	0%	0%
Humanities	198	51%	84%	51%	9%	3%	0%
Total	1298	41%	38%	15%	4%	1%	1%

GCSE Grades	2023-24	%
9	1976	58%
8	795	23%
7	414	12%
6	126	4%
5-1	75	2%
Total	3386	100

SPORTS & EXTRACURRICULARS

Team sports play a central role in the life of the school, with time set aside each week for physical activity and over 100 coached teams across all age ranges. The major sports offered at Latymer are rugby, soccer, and rowing for the boys, and field hockey, netball, rounders, and rowing for the girls, with cricket offered to both in the summer. We have a state-of-the-art sports centre on the King Street site, extensive playing fields in Wood Lane and Chiswick, and a boathouse overlooking the Thames.

Latymerians have the opportunity to participate in over 100 clubs and societies at the school. Music and drama are particularly strong, with four plays performed each year, and twelve school choirs and orchestras that perform regularly on site and at major London venues. Other extracurricular activities include subject extension classes, olympiads, debate and discussion societies, creative clubs, and the Duke of Edinburgh Award. We also run a dedicated off-site Activities Week each year in June.

DISCIPLINARY POLICY

Latymerians are encouraged to take personal responsibility for their academic and personal conduct. We will disclose on request any serious disciplinary violations relating to academic or behavioural misconduct.

FINANCIAL AID

We are committed to making a Latymer education accessible to high-achieving students from low income backgrounds. We currently provide financial aid to 20% of students and aim to increase that to 25% by 2024 through our Inspiring Minds campaign. We also provide a number of merit-based scholarships for exceptional ability in academics, sport, music, art, or drama.

LEAVERS' DESTINATIONS 2022-2024

UNITED STATES

Berklee College of Music	1
Boston University	1
Brown University	2
Carnegie Mellon University	3
Columbia University	3
Cornell University	2
Duke University	4
Georgetown	2
MIT	1
New York University	3
Santa Clara University	1
Sarah Lawrence College	1
Stanford University	1
UCLA	1
University of Chicago	5
University of Notre Dame	1
University of Pennsylvania	8
University of Vermont	1
University of Virginia	3
USC (University of Southern California)	1
Wesleyan University	1
Yale University	2

CANADA

University of Toronto	1
McGill University	4

EUROPE

Bocconi University	10
EHL Hospitality Business School	1
ETH Zurich	2
Humanitas University	1
ICADE	2
IE University, Madrid	1
Sciences Po	1
Trinity College Dublin	1

OTHER

Columbia-Sciences Po Dual BA Programme	1
--	---

UNITED KINGDOM

Brighton and Sussex Medical School	1
Cardiff University	3
City & Guilds of London Art School	1
Durham University	23
Dyson Institute of Engineering and Technology	1
Imperial College London	17
King's College London, University of London	19
London School of Economics and Political Science, University of London	3
Loughborough University	8
Middlesex University	1
Newcastle University	5
Northern Royal College of Music	1
Oxford Brookes University	2
Queen Mary, University of London	5
Royal Academy of Music	1
SOAS University of London	3
The University of Edinburgh	38
UCL (University College London)	29
University of Bath	33
University of Birmingham	5
University of Bristol	49
University of Cambridge	30
University of Exeter	17
University of Glasgow	3
University of Kent	1
University of Leeds	15
University of Liverpool	1
University of Manchester	22
University of Nottingham	3
University of Oxford	31
University of Reading	1
University of Sheffield	3
University of Southampton	6
University of St Andrews	7
University of Strathclyde	1
University of Surrey	3
University of Sussex	1
University of Warwick	25
University of Westminster, London	1
University of York	8

KEY CONTACTS

Pippa Gibbs

Head of International
University Advising

pccg@latymer-upper.org

Mark Holmes

Director of University Admissions
mgh@latymer-upper.org

Sam Adams

Assistant Head (Sixth Form)

Ian Emerson

Senior Deputy Head

Susan Wijeratna

Head

Latymer Upper School

King Street
London
W6 9LR

